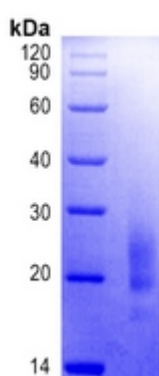


## Recombinant MPXV M1R Protein

Catalog #	Source	Reactivity	Applications
CRP3142	Human cells	MPXV	E, WB, SDS-PAGE, MS
<b>Description</b>	Recombinant MPXV M1R Protein is produced by mammalian expression system and the target gene encoding Gly2-Gly183 is expressed with a 6His tag at the C-terminus.		
<b>Form</b>	Liquid in a 0.2 µm filtered solution of PBS, pH 7.4.		
<b>Gene Symbol</b>			
<b>Alternative Names</b>	M1R; IMV membrane protein M1R		
<b>Entrez Gene</b>			
<b>SwissProt</b>	NP_536507.1		
<b>Purity</b>	Greater than 95% as determined by reducing SDS-PAGE.		
<b>Chemical Structure</b>			
<b>Quality Control</b>			
<b>Directions for Use</b>	Please minimize freeze-thaw cycles.		
<b>Storage/Stability</b>	Store it at -20°C to -80°C for one year. It is recommended that the protein be aliquoted for optimal storage. Avoid repeated freeze-thaw cycles.		



Greater than 95% as determined by reducing SDS-PAGE.

**Application key:** E- ELISA, WB- Western blot, IH- Immunohistochemistry, IF- Immunofluorescence, FC- Flow cytometry, IC- Immunocytochemistry, IP- Immunoprecipitation, ChIP- Chromatin Immunoprecipitation, EMSA- Electrophoretic Mobility Shift Assay, BL- Blocking, SE- Sandwich ELISA, CBE- Cell-based ELISA, RNAi- RNA interference

**Species reactivity key:** H- Human, M- Mouse, R- Rat, B- Bovine, C- Chicken, D- Dog, G- Goat, Mk- Monkey, P- Pig, Rb- Rabbit, S- Sheep, Z- Zebrafish

**COHESION BIOSCIENCES LIMITED**

**WEB**  
www.cohesionbio.com

**ORDER**  
order@cohesionbio.com

**SUPPORT**  
techsupport@cohesionbio.com

**CUSTOM**  
custom@cohesionbio.com