

Product Data Sheet

Recombinant COVID-19 Nucleocapsid Protein (Omicron, B.1.1.529)

Catalog #	Source	Reactivity	Applications
CRP3135	E.coli	COVID-19	E, WB, SDS-PAGE, MS
Description	Recombinant COVID-19 Nucleocapsid Protein (Omicron, B.1.1.529) is produced by our E.coli expression system and the target gene encoding Met1-Ala419 (P13L, E31del, R32del, S33del, R203K, G204R) is expressed with a 6His tag at the N-terminus. The mutations were identified in the COVID-19 variant (known as Omicron/B.1.1.529 lineage) which emerged in South Africa.		
Form	Liquid in a 0.2 µm filtered solution of 20 mM Tris-HCl, 300 mM NaCl, 1 mM EDTA, pH8.0.		
Gene Symbol			
Alternative Names	SARS-CoV-2 coronavirus NP Protein; SARS-CoV-2 np Protein; SARS-CoV-2 novel coronavirus Nucleoprotein Protein		
Entrez Gene	43740575		
SwissProt	PODTC9		
Purity	Greater than 95% as determined by reducing SDS-PAGE.		
Chemical Structure			
Quality Control			
Directions for Use	Please minimize freeze-thaw cycles.		
Storage/Stability	Store it at -20°C to -80°C for one year. It is recommended that the protein be aliquoted for optimal storage. Avoid repeated freeze-thaw cycles.		

Application key: E- ELISA, WB- Western blot, IH- Immunohistochemistry, IF- Immunofluorescence, FC- Flow cytometry, IC- Immunocytochemistry, IP- Immunoprecipitation, ChIP- Chromatin Immunoprecipitation, EMSA- Electrophoretic Mobility Shift Assay, BL- Blocking, SE- Sandwich ELISA, CBE- Cell-based ELISA, RNAi- RNA interference

Species reactivity key: H- Human, M- Mouse, R- Rat, B- Bovine, C- Chicken, D- Dog, G- Goat, Mk- Monkey, P- Pig, Rb- Rabbit, S- Sheep, Z- Zebrafish

COHESION BIOSCIENCES LIMITED

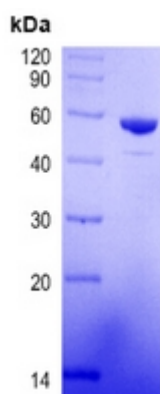
WEB
www.cohesionbio.com

ORDER
order@cohesionbio.com

SUPPORT
techsupport@cohesionbio.com

CUSTOM
custom@cohesionbio.com

Product Data Sheet



Greater than 95% as determined by reducing SDS-PAGE.

Application key: E- ELISA, WB- Western blot, IH- Immunohistochemistry, IF- Immunofluorescence, FC- Flow cytometry, IC- Immunocytochemistry, IP- Immunoprecipitation, ChIP- Chromatin Immunoprecipitation, EMSA- Electrophoretic Mobility Shift Assay, BL- Blocking, SE- Sandwich ELISA, CBE- Cell-based ELISA, RNAi- RNA interference

Species reactivity key: H- Human, M- Mouse, R- Rat, B- Bovine, C- Chicken, D- Dog, G- Goat, Mk- Monkey, P- Pig, Rb- Rabbit, S- Sheep, Z- Zebrafish

COHESION BIOSCIENCES LIMITED

WEB

www.cohesionbio.com

ORDER

order@cohesionbio.com

SUPPORT

techsupport@cohesionbio.com

CUSTOM

custom@cohesionbio.com