

# Product Data Sheet

## Recombinant COVID-19 S Protein RBD (Omicron, B.1.1.529)

Catalog #	Source	Reactivity	Applications
CRP3132	Human cells	COVID-19	E, WB, SDS-PAGE, MS
<b>Description</b>	Recombinant COVID-19 S protein RBD Protein is produced by our mammalian expression system and the target gene encoding Arg319-Phe541 (G339D, S371L, S373P, S375F, K417N, N440K, G446S, S477N, T478K, E484A, Q493R, G496S, Q498R, N501Y, Y505H) is expressed with a 6His tag at the C-terminus. G339D, S371L, S373P, S375F, K417N, N440K, G446S, S477N, T478K, E484A, Q493R, G496S, Q498R, N501Y and Y505H mutations were identified in the COVID-19 variant (known as Omicron/B.1.1.529 lineage) which emerged in South Africa.		
<b>Form</b>	Liquid in a 0.2 µm filtered solution of PBS, pH 7.4.		
<b>Gene Symbol</b>			
<b>Alternative Names</b>	SARS-CoV-2 RBD Protein; SARS-CoV-2 Spike RBD Protein; SARS-CoV-2 S Protein RBD		
<b>Entrez Gene</b>	43740568		
<b>SwissProt</b>	P0DTC2		
<b>Purity</b>	Greater than 95% as determined by reducing SDS-PAGE.		
<b>Chemical Structure</b>			
<b>Quality Control</b>			
<b>Directions for Use</b>	Please minimize freeze-thaw cycles.		
<b>Storage/Stability</b>	Store it at -20°C to -80°C for one year. It is recommended that the protein be aliquoted for optimal storage. Avoid repeated freeze-thaw cycles.		

**Application key:** E- ELISA, WB- Western blot, IH- Immunohistochemistry, IF- Immunofluorescence, FC- Flow cytometry, IC- Immunocytochemistry, IP- Immunoprecipitation, ChIP- Chromatin Immunoprecipitation, EMSA- Electrophoretic Mobility Shift Assay, BL- Blocking, SE- Sandwich ELISA, CBE- Cell-based ELISA, RNAi- RNA interference

**Species reactivity key:** H- Human, M- Mouse, R- Rat, B- Bovine, C- Chicken, D- Dog, G- Goat, Mk- Monkey, P- Pig, Rb- Rabbit, S- Sheep, Z- Zebrafish

### COHESION BIOSCIENCES LIMITED

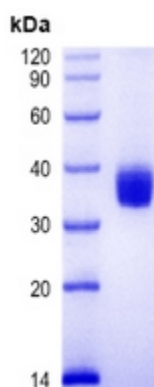
**WEB**  
www.cohesionbio.com

**ORDER**  
order@cohesionbio.com

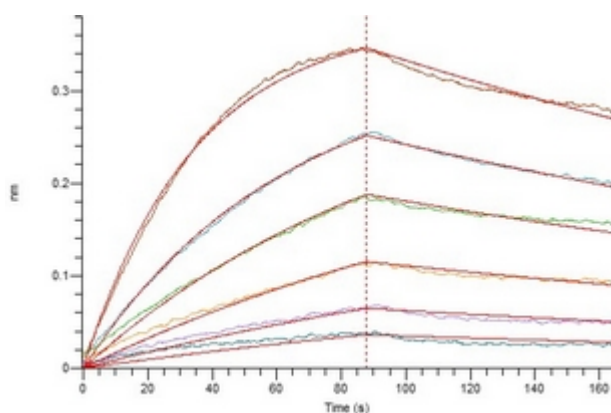
**SUPPORT**  
techsupport@cohesionbio.com

**CUSTOM**  
custom@cohesionbio.com

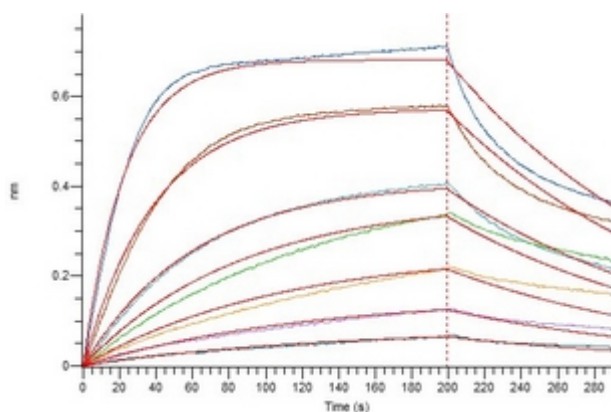
# Product Data Sheet



Greater than 95% as determined by reducing SDS-PAGE.



Loaded Human ACE-2 on Protein A Biosensor, can bind Recombinant COVID-19 S Protein RBD (Omicron, B.1.1.529) with an affinity constant of 6.32 nM as determined in bioactivity assay.



Loaded Anti-COVID-19 S1 mAb on Protein A Biosensor, can bind Recombinant COVID-19 S Protein RBD (Omicron, B.1.1.529) with an affinity constant of 19.5 nM as determined in bioactivity assay.

**Application key:** E- ELISA, WB- Western blot, IH- Immunohistochemistry, IF- Immunofluorescence, FC- Flow cytometry, IC- Immunocytochemistry, IP- Immunoprecipitation, ChIP- Chromatin Immunoprecipitation, EMSA- Electrophoretic Mobility Shift Assay, BL- Blocking, SE- Sandwich ELISA, CBE- Cell-based ELISA, RNAi- RNA interference

**Species reactivity key:** H- Human, M- Mouse, R- Rat, B- Bovine, C- Chicken, D- Dog, G- Goat, Mk- Monkey, P- Pig, Rb- Rabbit, S- Sheep, Z- Zebrafish

**COHESION BIOSCIENCES LIMITED**

**WEB**  
[www.cohesionbio.com](http://www.cohesionbio.com)

**ORDER**  
[order@cohesionbio.com](mailto:order@cohesionbio.com)

**SUPPORT**  
[techsupport@cohesionbio.com](mailto:techsupport@cohesionbio.com)

**CUSTOM**  
[custom@cohesionbio.com](mailto:custom@cohesionbio.com)