

Product Data Sheet

Recombinant Human SMAD3 Protein

Catalog #	Source	Reactivity	Applications
CRP2818	E. coli	Human	E, WB, SDS-PAGE, MS
Description	Recombinant Human SMAD3 Protein is produced by E.coli expression system and the target gene encoding Ser2-Ser425 is expressed with a 6His, Flag tag at the N-terminus.		
Form	Liquid in a 0.2 µm filtered solution of 20mM Tris-HCl, 500mM NaCl, 10% Glycerol, 2mM EDTA, pH 8.0.		
Gene Symbol	SMAD3		
Alternative Names	MADH3; Mothers against decapentaplegic homolog 3; MAD homolog 3; Mad3; Mothers against DPP homolog 3; hMAD-3; JV15-2; SMAD family member 3; SMAD 3; Smad3; hSMAD3		
Entrez Gene	4088 (Human)		
SwissProt	P84022 (Human)		
Purity	Greater than 95% as determined by reducing SDS-PAGE.		
Chemical Structure	MRGSHHHHHH GSDYKDDDDK SSILPFTPPI VKRLLGWKKG EQNGQEEKWC EKAVKSLVKK LKKTGQLDEL EKAITTQNVN TKCITIPRSL DGRLQVSHRK GLPHVIYCRL WRWPDLHSHH ELRAMELCEF AFNMKKDEVC VNPYHYQRVE TPVLPPVLVP RHTEIPAEFP PLDDYSHSIP ENTNFPAGIE PQSNIPETPP PGYLS E DGET SDHQMNHSM D AGSPNLSPNP MSPAHNNLDL QPVTYCEPAF WCSISYYELN QRVGETFHAS QPSMTVDGFT DPSNSERFCL GLLSNVNRNA AVELTRRHIG RGVRLYYIGG EVFAECLSDS AIFVQSPNCN QRYGWHPATV CKIPPGCNLK IFNNQEFAAL LAQSVNQGFE AVYQLTRMCT IRMSFVKGWG AEYRRQTVTS TPCWIELHLN GPLQWLDKVL TQMGSPSIRC SSVS		
Quality Control	Endotoxin: Less than 0.1 ng/µg (1 IEU/µg) as determined by LAL test.		
Application key: E- ELISA, WB- Western blot, IH- Immunohistochemistry, IF- Immunofluorescence, FC- Flow cytometry, IC- Immunocytochemistry, IP- Immunoprecipitation, ChIP- Chromatin Immunoprecipitation, EMSA- Electrophoretic Mobility Shift Assay, BL- Blocking, SE- Sandwich ELISA, CBE- Cell-based ELISA, RNAi- RNA interference			
Species reactivity key: H- Human, M- Mouse, R- Rat, B- Bovine, C- Chicken, D- Dog, G- Goat, Mk- Monkey, P- Pig, Rb- Rabbit, S- Sheep, Z- Zebrafish			

COHESION BIOSCIENCES LIMITED

WEB
www.cohesionbio.com

ORDER
order@cohesionbio.com

SUPPORT
techsupport@cohesionbio.com

CUSTOM
custom@cohesionbio.com

Product Data Sheet

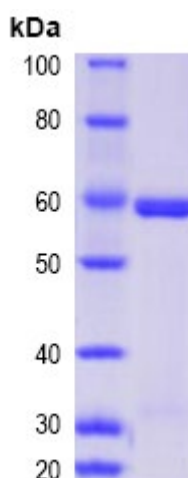
Directions for Use

Always centrifuge tubes before opening. Do not mix by vortex or pipetting. It is not recommended to reconstitute to a concentration less than 100 µg/ml. Dissolve the lyophilized protein in ddH₂O. Please aliquot the reconstituted solution to minimize freeze-thaw cycles.

Storage/Stability

Store it at -20°C to -80°C for one year. It is recommended that the protein be aliquoted for optimal storage. Avoid repeated freeze-thaw cycles.

SDS-PAGE



Application key: E- ELISA, WB- Western blot, IH- Immunohistochemistry, IF- Immunofluorescence, FC- Flow cytometry, IC- Immunocytochemistry, IP- Immunoprecipitation, ChIP- Chromatin Immunoprecipitation, EMSA- Electrophoretic Mobility Shift Assay, BL- Blocking, SE- Sandwich ELISA, CBE- Cell-based ELISA, RNAi- RNA interference

Species reactivity key: H- Human, M- Mouse, R- Rat, B- Bovine, C- Chicken, D- Dog, G- Goat, Mk- Monkey, P- Pig, Rb- Rabbit, S- Sheep, Z- Zebrafish

COHESION BIOSCIENCES LIMITED

WEB

www.cohesionbio.com

ORDER

order@cohesionbio.com

SUPPORT

techsupport@cohesionbio.com

CUSTOM

custom@cohesionbio.com