

Product Data Sheet

Anti-DHDDS Antibody

Catalog #	Source	Reactivity	Applications
CQA4258	Rabbit	H, M, R	WB
Description	Rabbit polyclonal antibody to DHDDS		
Immunogen	Recombinant fusion protein of human DHDDS. The exact sequence is proprietary.		
Purification	The antibody was purified by immunogen affinity chromatography.		
Specificity	Recognizes endogenous levels of DHDDS protein		
Clonality	Polyclonal		
Conjugation			
Form	Liquid in 0.42% Potassium phosphate, 0.87% Sodium chloride, pH 7.3, 30% glycerol, and 0.01% sodium azide.		
Dilution	WB (1/500 - 1/2000)		
Gene Symbol	DHDDS		
Alternative Names	HDS; Dehydrodolichyl diphosphate synthase; Dedol-PP synthase; Cis-isoprenyltransferase; CIT; Cis-IPTase; Epididymis tissue protein Li 189m		
Entrez Gene	79947 (Human); 67422 (Mouse)		
SwissProt	Q86SQ9 (Human); Q99KU1 (Mouse)		
Storage/Stability	Shipped at 4°C. Upon delivery aliquot and store at -20°C for one year. Avoid freeze/thaw cycles.		

Application key: E- ELISA, WB- Western blot, IH- Immunohistochemistry, IF- Immunofluorescence, FC- Flow cytometry, IC- Immunocytochemistry, IP- Immunoprecipitation, ChIP- Chromatin Immunoprecipitation, EMSA- Electrophoretic Mobility Shift Assay, BL- Blocking, SE- Sandwich ELISA, CBE- Cell-based ELISA, RNAi- RNA interference

Species reactivity key: H- Human, M- Mouse, R- Rat, B- Bovine, C- Chicken, D- Dog, G- Goat, Mk- Monkey, P- Pig, Rb- Rabbit, S- Sheep, Z- Zebrafish

COHESION BIOSCIENCES LIMITED

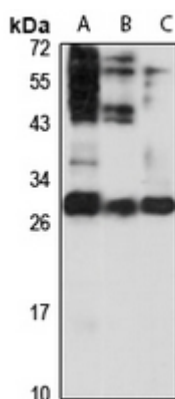
WEB
www.cohesionbio.com

ORDER
order@cohesionbio.com

SUPPORT
techsupport@cohesionbio.com

CUSTOM
custom@cohesionbio.com

Product Data Sheet



Western blot analysis of DHDDS expression in HEK293T (A), mouse testis (B), rat thymus (C) whole cell lysates. (Predicted band size: 34; 38 kD; Observed band size: 30 kD)

Application key: E- ELISA, WB- Western blot, IH- Immunohistochemistry, IF- Immunofluorescence, FC- Flow cytometry, IC- Immunocytochemistry, IP- Immunoprecipitation, ChIP- Chromatin Immunoprecipitation, EMSA- Electrophoretic Mobility Shift Assay, BL- Blocking, SE- Sandwich ELISA, CBE- Cell-based ELISA, RNAi- RNA interference

Species reactivity key: H- Human, M- Mouse, R- Rat, B- Bovine, C- Chicken, D- Dog, G- Goat, Mk- Monkey, P- Pig, Rb- Rabbit, S- Sheep, Z- Zebrafish

COHESION BIOSCIENCES LIMITED

WEB
www.cohesionbio.com

ORDER
order@cohesionbio.com

SUPPORT
techsupport@cohesionbio.com

CUSTOM
custom@cohesionbio.com