

# Product Data Sheet

## Anti-Caveolin 2 (Phospho-Y27) Antibody

| Catalog #                | Source  | Reactivity | Applications |
|--------------------------|---|------------|--------------|
| CPA6050                  | Rabbit  | H, M, R    | WB, IH       |
| <b>Description</b>       | Rabbit polyclonal antibody to Caveolin 2 (Phospho-Y27)  |            |              |
| <b>Immunogen</b>         | KLH-conjugated synthetic phosphopeptide corresponding to residues surrounding Y27 of human Caveolin 2 protein. The exact sequence is proprietary. |            |              |
| <b>Purification</b>      | The antibody was purified by immunogen affinity chromatography.   |            |              |
| <b>Specificity</b>       | Recognizes endogenous levels of Caveolin 2 protein only when phosphorylated at Y27.   |            |              |
| <b>Clonality</b>         | Polyclonal  |            |              |
| <b>Conjugation</b>       |   |            |              |
| <b>Form</b>              | Liquid in 0.42% Potassium phosphate, 0.87% Sodium chloride, pH 7.3, 30% glycerol, and 0.01% sodium azide.   |            |              |
| <b>Dilution</b>          | WB (1/500 - 1/1000), IH (1/50 - 1/100)  |            |              |
| <b>Gene Symbol</b>       | CAV2  |            |              |
| <b>Alternative Names</b> | Caveolin-2  |            |              |
| <b>Entrez Gene</b>       | 858 (Human); 12390 (Mouse); 363425 (Rat)  |            |              |
| <b>SwissProt</b>         | P51636 (Human); Q9WVC3 (Mouse); Q2IBC5 (Rat)  |            |              |
| <b>Storage/Stability</b> | Shipped at 4°C. Upon delivery aliquot and store at -20°C for one year. Avoid freeze/thaw cycles.  |            |              |

**Application key:** E- ELISA, WB- Western blot, IH- Immunohistochemistry, IF- Immunofluorescence, FC- Flow cytometry, IC- Immunocytochemistry, IP- Immunoprecipitation, ChIP- Chromatin Immunoprecipitation, EMSA- Electrophoretic Mobility Shift Assay, BL- Blocking, SE- Sandwich ELISA, CBE- Cell-based ELISA, RNAi- RNA interference

**Species reactivity key:** H- Human, M- Mouse, R- Rat, B- Bovine, C- Chicken, D- Dog, G- Goat, Mk- Monkey, P- Pig, Rb- Rabbit, S- Sheep, Z- Zebrafish

### COHESION BIOSCIENCES LIMITED

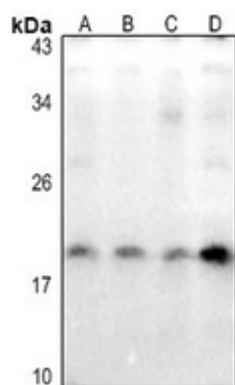
**WEB**  
www.cohesionbio.com

**ORDER**  
order@cohesionbio.com

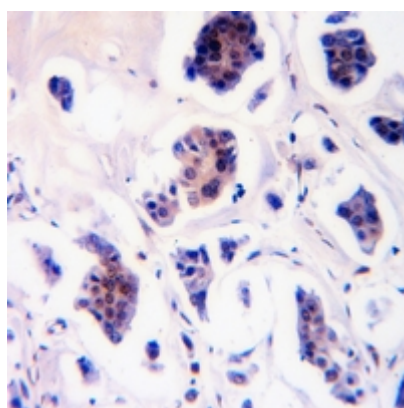
**SUPPORT**  
techsupport@cohesionbio.com

**CUSTOM**  
custom@cohesionbio.com

## Product Data Sheet



Western blot analysis of Caveolin 2 (Phospho-Y27) expression in A2780 (A), H1792 (B), PC12 (C), AML12 (D) whole cell lysates. (Predicted band size: 18 kD; Observed band size: 18 kD)



Immunohistochemical analysis of Caveolin 2 (Phospho-Y27) staining in human breast cancer formalin fixed paraffin embedded tissue section. The section was pre-treated using heat mediated antigen retrieval with sodium citrate buffer (pH 6.0). The section was then incubated with the antibody at room temperature and detected using an HRP conjugated compact polymer system. DAB was used as the chromogen. The section was then counterstained with haematoxylin and mounted with DPX.

**Application key:** E- ELISA, WB- Western blot, IH- Immunohistochemistry, IF- Immunofluorescence, FC- Flow cytometry, IC- Immunocytochemistry, IP- Immunoprecipitation, ChIP- Chromatin Immunoprecipitation, EMSA- Electrophoretic Mobility Shift Assay, BL- Blocking, SE- Sandwich ELISA, CBE- Cell-based ELISA, RNAi- RNA interference

**Species reactivity key:** H- Human, M- Mouse, R- Rat, B- Bovine, C- Chicken, D- Dog, G- Goat, Mk- Monkey, P- Pig, Rb- Rabbit, S- Sheep, Z- Zebrafish

**COHESION BIOSCIENCES LIMITED**

**WEB**  
[www.cohesionbio.com](http://www.cohesionbio.com)

**ORDER**  
[order@cohesionbio.com](mailto:order@cohesionbio.com)

**SUPPORT**  
[techsupport@cohesionbio.com](mailto:techsupport@cohesionbio.com)

**CUSTOM**  
[custom@cohesionbio.com](mailto:custom@cohesionbio.com)