

# Product Data Sheet

## Anti-NFAT5 Antibody

Catalog #	Source	Reactivity	Applications
CPA4753	Rabbit	H, M, R	WB, IH
<b>Description</b>	Rabbit polyclonal antibody to NFAT5		
<b>Immunogen</b>	KLH-conjugated synthetic peptide encompassing a sequence within the C-term region of human NFAT5. The exact sequence is proprietary.		
<b>Purification</b>	The antibody was purified by immunogen affinity chromatography.		
<b>Specificity</b>	Recognizes endogenous levels of NFAT5 protein.		
<b>Clonality</b>	Polyclonal		
<b>Conjugation</b>			
<b>Form</b>	Liquid in 0.42% Potassium phosphate, 0.87% Sodium chloride, pH 7.3, 30% glycerol, and 0.01% sodium azide.		
<b>Dilution</b>	WB (1/500 - 1/1000), IH (1/100 - 1/200)		
<b>Gene Symbol</b>	NFAT5		
<b>Alternative Names</b>	KIAA0827; TONEBP; Nuclear factor of activated T-cells 5; NF-AT5; T-cell transcription factor NFAT5; Tonicity-responsive enhancer-binding protein; TonE-binding protein; TonEBP		
<b>Entrez Gene</b>	10725 (Human); 54446 (Mouse); 307820 (Rat)		
<b>SwissProt</b>	O94916 (Human); Q9WV30 (Mouse); D3ZGB1 (Rat)		
<b>Storage/Stability</b>	Shipped at 4° C. Upon delivery aliquot and store at -20° C for one year. Avoid freeze/thaw cycles.		

**Application key:** E- ELISA, WB- Western blot, IH- Immunohistochemistry, IF- Immunofluorescence, FC- Flow cytometry, IC- Immunocytochemistry, IP- Immunoprecipitation, ChIP- Chromatin Immunoprecipitation, EMSA- Electrophoretic Mobility Shift Assay, BL- Blocking, SE- Sandwich ELISA, CBE- Cell-based ELISA, RNAi- RNA interference

**Species reactivity key:** H- Human, M- Mouse, R- Rat, B- Bovine, C- Chicken, D- Dog, G- Goat, Mk- Monkey, P- Pig, Rb- Rabbit, S- Sheep, Z- Zebrafish

### COHESION BIOSCIENCES LIMITED

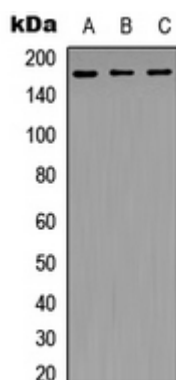
**WEB**  
www.cohesionbio.com

**ORDER**  
order@cohesionbio.com

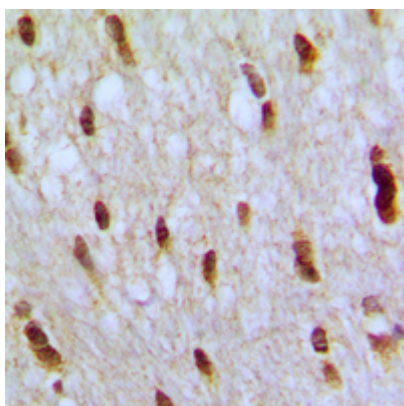
**SUPPORT**  
techsupport@cohesionbio.com

**CUSTOM**  
custom@cohesionbio.com

## Product Data Sheet



Western blot analysis of NFAT5 expression in HT29 (A), Jurkat (B), HeLa (C) whole cell lysates. (Predicted band size: 10; 157; 165; 167 kD; Observed band size: 174 kD)



Immunohistochemical analysis of NFAT5 staining in human brain formalin fixed paraffin embedded tissue section. The section was pre-treated using heat mediated antigen retrieval with sodium citrate buffer (pH 6.0). The section was then incubated with the antibody at room temperature and detected using an HRP conjugated compact polymer system. DAB was used as the chromogen. The section was then counterstained with haematoxylin and mounted with DPX.

**Application key:** E- ELISA, WB- Western blot, IH- Immunohistochemistry, IF- Immunofluorescence, FC- Flow cytometry, IC- Immunocytochemistry, IP- Immunoprecipitation, ChIP- Chromatin Immunoprecipitation, EMSA- Electrophoretic Mobility Shift Assay, BL- Blocking, SE- Sandwich ELISA, CBE- Cell-based ELISA, RNAi- RNA interference

**Species reactivity key:** H- Human, M- Mouse, R- Rat, B- Bovine, C- Chicken, D- Dog, G- Goat, Mk- Monkey, P- Pig, Rb- Rabbit, S- Sheep, Z- Zebrafish

**COHESION BIOSCIENCES LIMITED**

**WEB**  
[www.cohesionbio.com](http://www.cohesionbio.com)

**ORDER**  
[order@cohesionbio.com](mailto:order@cohesionbio.com)

**SUPPORT**  
[techsupport@cohesionbio.com](mailto:techsupport@cohesionbio.com)

**CUSTOM**  
[custom@cohesionbio.com](mailto:custom@cohesionbio.com)