

# Product Data Sheet

## Anti-FTH1 Antibody

| Catalog #                | Source  | Reactivity     | Applications |
|--------------------------|---|----------------|--------------|
| CPA4412                  | Rabbit  | H, M, R, D, Mk | WB, IF/IC    |
| <b>Description</b>       | Rabbit polyclonal antibody to FTH1  |                |              |
| <b>Immunogen</b>         | KLH-conjugated synthetic peptide encompassing a sequence within the center region of human FTH1. The exact sequence is proprietary. |                |              |
| <b>Purification</b>      | The antibody was purified by immunogen affinity chromatography.   |                |              |
| <b>Specificity</b>       | Recognizes endogenous levels of FTH1 protein.   |                |              |
| <b>Clonality</b>         | Polyclonal  |                |              |
| <b>Conjugation</b>       |   |                |              |
| <b>Form</b>              | Liquid in 0.42% Potassium phosphate, 0.87% Sodium chloride, pH 7.3, 30% glycerol, and 0.01% sodium azide.                           |                |              |
| <b>Dilution</b>          | WB (1/500 - 1/1000), IF/IC (1/50 - 1/200)   |                |              |
| <b>Gene Symbol</b>       | FTH1  |                |              |
| <b>Alternative Names</b> | FTH; FTHL6; Ferritin heavy chain; Ferritin H subunit; Cell proliferation-inducing gene 15 protein                                   |                |              |
| <b>Entrez Gene</b>       | 2495 (Human); 14319 (Mouse); 25319 (Rat)  |                |              |
| <b>SwissProt</b>         | P02794 (Human); P09528 (Mouse); P19132 (Rat)  |                |              |
| <b>Storage/Stability</b> | Shipped at 4°C. Upon delivery aliquot and store at -20°C for one year. Avoid freeze/thaw cycles.                                    |                |              |

**Application key:** E- ELISA, WB- Western blot, IH- Immunohistochemistry, IF- Immunofluorescence, FC- Flow cytometry, IC- Immunocytochemistry, IP- Immunoprecipitation, ChIP- Chromatin Immunoprecipitation, EMSA- Electrophoretic Mobility Shift Assay, BL- Blocking, SE- Sandwich ELISA, CBE- Cell-based ELISA, RNAi- RNA interference

**Species reactivity key:** H- Human, M- Mouse, R- Rat, B- Bovine, C- Chicken, D- Dog, G- Goat, Mk- Monkey, P- Pig, Rb- Rabbit, S- Sheep, Z- Zebrafish

### COHESION BIOSCIENCES LIMITED

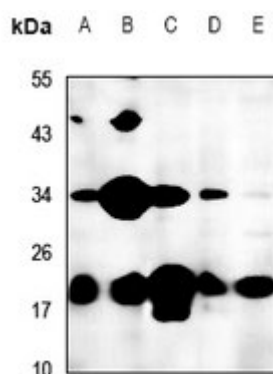
**WEB**  
www.cohesionbio.com

**ORDER**  
order@cohesionbio.com

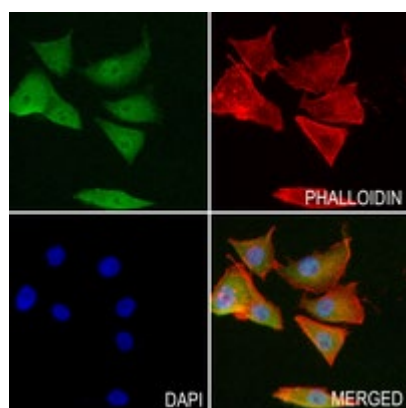
**SUPPORT**  
techsupport@cohesionbio.com

**CUSTOM**  
custom@cohesionbio.com

## Product Data Sheet



Western blot analysis of FTH1 expression in LO2 (A), C6 (B), MEF (C), U87MG (D), HepG2 (E) whole cell lysates. (Predicted band size: 21 kD; Observed band size: 21 kD)



Immunofluorescent analysis of FTH1 staining in MG63 cells. Formalin-fixed cells were permeabilized with 0.1% Triton X-100 in TBS for 5-10 minutes and blocked with 3% BSA-PBS for 30 minutes at room temperature. Cells were probed with the primary antibody in 3% BSA-PBS and incubated overnight at 4 °C in a humidified chamber. Cells were washed with PBST and incubated with a AF488-conjugated secondary antibody (green) in PBS at room temperature in the dark. Phalloidin - AF594 was used to stain Actin filaments (red). DAPI was used to stain the cell nuclei (blue).

**Application key:** E- ELISA, WB- Western blot, IH- Immunohistochemistry, IF- Immunofluorescence, FC- Flow cytometry, IC- Immunocytochemistry, IP- Immunoprecipitation, ChIP- Chromatin Immunoprecipitation, EMSA- Electrophoretic Mobility Shift Assay, BL- Blocking, SE- Sandwich ELISA, CBE- Cell-based ELISA, RNAi- RNA interference

**Species reactivity key:** H- Human, M- Mouse, R- Rat, B- Bovine, C- Chicken, D- Dog, G- Goat, Mk- Monkey, P- Pig, Rb- Rabbit, S- Sheep, Z- Zebrafish

**COHESION BIOSCIENCES LIMITED**

**WEB**  
[www.cohesionbio.com](http://www.cohesionbio.com)

**ORDER**  
[order@cohesionbio.com](mailto:order@cohesionbio.com)

**SUPPORT**  
[techsupport@cohesionbio.com](mailto:techsupport@cohesionbio.com)

**CUSTOM**  
[custom@cohesionbio.com](mailto:custom@cohesionbio.com)