

Product Data Sheet

Anti-Beta-tubulin Antibody

Catalog #	Source	Reactivity	Applications
CPA3529	Rabbit	H, M, R	WB
Description	Rabbit polyclonal antibody to Beta-tubulin		
Immunogen	KLH-conjugated synthetic peptide encompassing a sequence within the center region of human Beta-tubulin. The exact sequence is proprietary.		
Purification	The antibody was purified by immunogen affinity chromatography.		
Specificity	Recognizes endogenous levels of Beta-tubulin protein.		
Clonality	Polyclonal		
Conjugation			
Form	Liquid in 0.42% Potassium phosphate, 0.87% Sodium chloride, pH 7.3, 30% glycerol, and 0.01% sodium azide.		
Dilution	WB (1/1000 - 1/3000)		
Gene Symbol	TUBB1; TUBB2A; TUBB2B; TUBB4B; TUBB		
Alternative Names	TUBB1; Tubulin beta-1 chain; TUBB2A; TUBB2; Tubulin beta-2A chain; TUBB2B; Tubulin beta-2B chain; TUBB4B; TUBB2C; Tubulin beta-4B chain; Tubulin beta-2 chain; Tubulin beta-2C chain; TUBB3; TUBB4; Tubulin beta-3 chain; Tubulin beta-4 chain; Tubulin beta-II		
Entrez Gene	81027, 7280, 347733, 10383, 10381, 56604, 10382, 203068, 84617, 347688 (Human); 545486, 22151, 73710, 227613 (Mouse); 498736, 291081, 296554 (Rat)		
SwissProt	Q9H4B7, Q13885, Q9BVA1, P68371, Q13509, Q99867, P04350, P07437, Q9BUF5, Q3ZCM7 (Human); A2AQ07, Q7TMM9, Q9CWF2, P68372 (Mouse); P85108, Q3KRE8, Q6P9T8 (Rat)		
Storage/Stability	Shipped at 4°C. Upon delivery aliquot and store at -20°C for one year. Avoid		
Application key: E- ELISA, WB- Western blot, IH- Immunohistochemistry, IF- Immunofluorescence, FC- Flow cytometry, IC- Immunocytochemistry, IP- Immunoprecipitation, ChIP- Chromatin Immunoprecipitation, EMSA- Electrophoretic Mobility Shift Assay, BL- Blocking, SE- Sandwich ELISA, CBE- Cell-based ELISA, RNAi- RNA interference			
Species reactivity key: H- Human, M- Mouse, R- Rat, B- Bovine, C- Chicken, D- Dog, G- Goat, Mk- Monkey, P- Pig, Rb- Rabbit, S- Sheep, Z- Zebrafish			

COHESION BIOSCIENCES LIMITED

WEB
www.cohesionbio.com

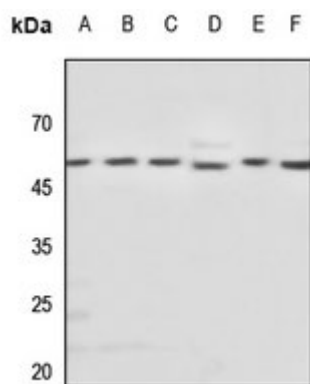
ORDER
order@cohesionbio.com

SUPPORT
techsupport@cohesionbio.com

CUSTOM
custom@cohesionbio.com

Product Data Sheet

freeze/thaw cycles.



Western blot analysis of Beta-tubulin expression in HEK293T (A), Hela (B), H460 (C), mouse spleen (D), rat lung (E), rat spleen (F) whole cell lysates. (Predicted band size: 49; 50 kD; Observed band size: 50 kD)

Application key: E- ELISA, WB- Western blot, IH- Immunohistochemistry, IF- Immunofluorescence, FC- Flow cytometry, IC- Immunocytochemistry, IP- Immunoprecipitation, ChIP- Chromatin Immunoprecipitation, EMSA- Electrophoretic Mobility Shift Assay, BL- Blocking, SE- Sandwich ELISA, CBE- Cell-based ELISA, RNAi- RNA interference

Species reactivity key: H- Human, M- Mouse, R- Rat, B- Bovine, C- Chicken, D- Dog, G- Goat, Mk- Monkey, P- Pig, Rb- Rabbit, S- Sheep, Z- Zebrafish

COHESION BIOSCIENCES LIMITED

WEB
www.cohesionbio.com

ORDER
order@cohesionbio.com

SUPPORT
techsupport@cohesionbio.com

CUSTOM
custom@cohesionbio.com