

Product Data Sheet

Anti-Cytochrome P450 4X1 Antibody

Catalog #	Source	Reactivity	Applications
CPA2896	Rabbit	H, M, R	WB, IH
Description	Rabbit polyclonal antibody to Cytochrome P450 4X1		
Immunogen	KLH-conjugated synthetic peptide encompassing a sequence within the center region of human Cytochrome P450 4X1. The exact sequence is proprietary.		
Purification	The antibody was purified by immunogen affinity chromatography.		
Specificity	Recognizes endogenous levels of Cytochrome P450 4X1 protein.		
Clonality	Polyclonal		
Conjugation			
Form	Liquid in 0.42% Potassium phosphate, 0.87% Sodium chloride, pH 7.3, 30% glycerol, and 0.01% sodium azide.		
Dilution	WB (1/500 - 1/1000), IH (1/100 - 1/200)		
Gene Symbol	CYP4X1		
Alternative Names	Cytochrome P450 4X1; CYP4X1		
Entrez Gene	260293 (Human); 81906 (Mouse); 246767 (Rat)		
SwissProt	Q8N118 (Human); Q6A152 (Mouse); Q8K4D6 (Rat)		
Storage/Stability	Shipped at 4°C. Upon delivery aliquot and store at -20°C for one year. Avoid freeze/thaw cycles.		

Application key: E- ELISA, WB- Western blot, IH- Immunohistochemistry, IF- Immunofluorescence, FC- Flow cytometry, IC- Immunocytochemistry, IP- Immunoprecipitation, ChIP- Chromatin Immunoprecipitation, EMSA- Electrophoretic Mobility Shift Assay, BL- Blocking, SE- Sandwich ELISA, CBE- Cell-based ELISA, RNAi- RNA interference

Species reactivity key: H- Human, M- Mouse, R- Rat, B- Bovine, C- Chicken, D- Dog, G- Goat, Mk- Monkey, P- Pig, Rb- Rabbit, S- Sheep, Z- Zebrafish

COHESION BIOSCIENCES LIMITED

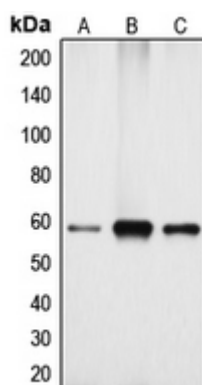
WEB
www.cohesionbio.com

ORDER
order@cohesionbio.com

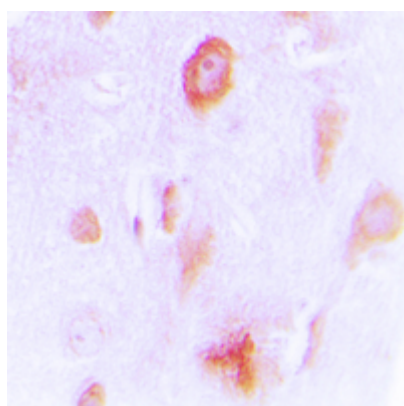
SUPPORT
techsupport@cohesionbio.com

CUSTOM
custom@cohesionbio.com

Product Data Sheet



Western blot analysis of Cytochrome P450 4X1 expression in Jurkat (A), mouse kidney (B), rat kidney (C) whole cell lysates. (Predicted band size: 58 kD; Observed band size: 59 kD)



Immunohistochemical analysis of Cytochrome P450 4X1 staining in human brain formalin fixed paraffin embedded tissue section. The section was pre-treated using heat mediated antigen retrieval with sodium citrate buffer (pH 6.0). The section was then incubated with the antibody at room temperature and detected using an HRP conjugated compact polymer system. DAB was used as the chromogen. The section was then counterstained with haematoxylin and mounted with DPX.

Application key: E- ELISA, WB- Western blot, IH- Immunohistochemistry, IF- Immunofluorescence, FC- Flow cytometry, IC- Immunocytochemistry, IP- Immunoprecipitation, ChIP- Chromatin Immunoprecipitation, EMSA- Electrophoretic Mobility Shift Assay, BL- Blocking, SE- Sandwich ELISA, CBE- Cell-based ELISA, RNAi- RNA interference

Species reactivity key: H- Human, M- Mouse, R- Rat, B- Bovine, C- Chicken, D- Dog, G- Goat, Mk- Monkey, P- Pig, Rb- Rabbit, S- Sheep, Z- Zebrafish

COHESION BIOSCIENCES LIMITED

WEB
www.cohesionbio.com

ORDER
order@cohesionbio.com

SUPPORT
techsupport@cohesionbio.com

CUSTOM
custom@cohesionbio.com