

Product Data Sheet

Recombinant Anti-ACAT1 Rabbit mAb

| Catalog # | Source | Reactivity | Applications |
|--------------------------|--|------------|--------------|
| CMA4291 | Rabbit | H, M, R | WB, IH |
| Description | Recombinant rabbit monoclonal antibody to ACAT1 | | |
| Immunogen | KLH-conjugated synthetic peptide encompassing a sequence within human ACAT1. The exact sequence is proprietary. | | |
| Purification | The antibody was purified by immunogen affinity chromatography. | | |
| Specificity | Recognizes endogenous levels of ACAT1 protein | | |
| Clonality | Monoclonal | | |
| Conjugation | | | |
| Form | Liquid in PBS containing 50% glycerol, 0.2% BSA and 0.01% sodium azide. | | |
| Dilution | WB (1/500 - 1/1000), IH (1/50 - 1/200) | | |
| Gene Symbol | ACAT1 | | |
| Alternative Names | ACAT; MAT; Acetyl-CoA acetyltransferase, mitochondrial; Acetoacetyl-CoA thiolase; T2 | | |
| Entrez Gene | 38 (Human); 110446 (Mouse); 25014 (Rat) | | |
| SwissProt | P24752 (Human); Q8QZT1 (Mouse); P17764 (Rat) | | |
| Storage/Stability | Shipped at 4°C. Upon delivery aliquot and store at -20°C for one year. Avoid freeze/thaw cycles. | | |

Application key: E- ELISA, WB- Western blot, IH- Immunohistochemistry, IF- Immunofluorescence, FC- Flow cytometry, IC- Immunocytochemistry, IP- Immunoprecipitation, ChIP- Chromatin Immunoprecipitation, EMSA- Electrophoretic Mobility Shift Assay, BL- Blocking, SE- Sandwich ELISA, CBE- Cell-based ELISA, RNAi- RNA interference

Species reactivity key: H- Human, M- Mouse, R- Rat, B- Bovine, C- Chicken, D- Dog, G- Goat, Mk- Monkey, P- Pig, Rb- Rabbit, S- Sheep, Z- Zebrafish

COHESION BIOSCIENCES LIMITED

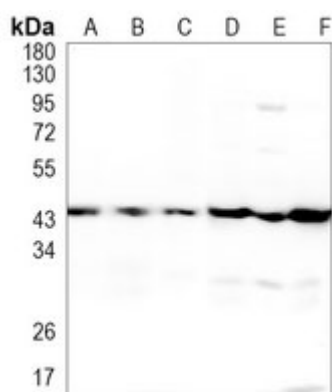
WEB
www.cohesionbio.com

ORDER
order@cohesionbio.com

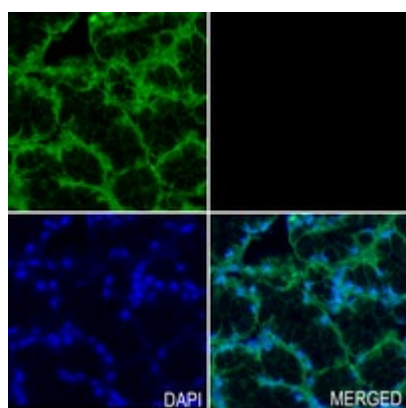
SUPPORT
techsupport@cohesionbio.com

CUSTOM
custom@cohesionbio.com

Product Data Sheet



Western blot analysis of ACAT1 expression in HEK293T (A), PC3 (B), THP1 (C), mouse kidney (D), rat liver (E), rat kidney (F) whole cell lysates. (Predicted band size: 45 kD; Observed band size: 45 kD)



Immunohistochemical analysis of ACAT1 staining in human stomach cancer formalin fixed paraffin embedded tissue section. The section was pre-treated using heat mediated antigen retrieval with sodium citrate buffer (pH 6.0). The section was then incubated with the antibody at room temperature and detected using an HRP conjugated compact polymer system. Tyramide-AF488 (green) was used as the chromogen. The section was then counterstained with DAPI (blue)..

Application key: E- ELISA, WB- Western blot, IH- Immunohistochemistry, IF- Immunofluorescence, FC- Flow cytometry, IC- Immunocytochemistry, IP- Immunoprecipitation, ChIP- Chromatin Immunoprecipitation, EMSA- Electrophoretic Mobility Shift Assay, BL- Blocking, SE- Sandwich ELISA, CBE- Cell-based ELISA, RNAi- RNA interference

Species reactivity key: H- Human, M- Mouse, R- Rat, B- Bovine, C- Chicken, D- Dog, G- Goat, Mk- Monkey, P- Pig, Rb- Rabbit, S- Sheep, Z- Zebrafish

COHESION BIOSCIENCES LIMITED

WEB
www.cohesionbio.com

ORDER
order@cohesionbio.com

SUPPORT
techsupport@cohesionbio.com

CUSTOM
custom@cohesionbio.com