

## Product Data Sheet

## Recombinant Anti-HA-tag Rabbit mAb

Catalog #	Source	Reactivity	Applications
CMA1200	Rabbit	N/A	WB, IF/IC, IP
<b>Description</b>	Recombinant rabbit monoclonal antibody HA-tag		
<b>Immunogen</b>	KLH-conjugated synthetic peptide YPYDVPDYA.		
<b>Purification</b>	The antibody was purified by immunogen affinity chromatography.		
<b>Specificity</b>	Recognizes the HA-tag fused to the amino- or carboxy- termini of targeted proteins in transfected or transformed cells.		
<b>Clonality</b>	Monoclonal		
<b>Conjugation</b>			
<b>Form</b>	Liquid in PBS, pH 7.3, 50% glycerol, and 0.05% Proclin300.		
<b>Dilution</b>	WB (1/5000 - 1/20000), IF/IC (1/300 - 1/1000), IP (1/50 - 1/200)		
<b>Gene Symbol</b>			
<b>Alternative Names</b>	HA epitope tag; hemagglutinin		
<b>Entrez Gene</b>			
<b>SwissProt</b>			
<b>Storage/Stability</b>	Shipped at 4°C. Upon delivery aliquot and store at -20°C for one year. Avoid freeze/thaw cycles.		

**Application key:** E- ELISA, WB- Western blot, IH- Immunohistochemistry, IF- Immunofluorescence, FC- Flow cytometry, IC- Immunocytochemistry, IP- Immunoprecipitation, ChIP- Chromatin Immunoprecipitation, EMSA- Electrophoretic Mobility Shift Assay, BL- Blocking, SE- Sandwich ELISA, CBE- Cell-based ELISA, RNAi- RNA interference

**Species reactivity key:** H- Human, M- Mouse, R- Rat, B- Bovine, C- Chicken, D- Dog, G- Goat, Mk- Monkey, P- Pig, Rb- Rabbit, S- Sheep, Z- Zebrafish

## COHESION BIOSCIENCES LIMITED

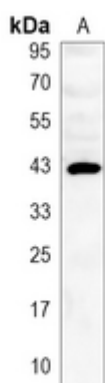
WEB  
[www.cohesionbio.com](http://www.cohesionbio.com)

ORDER  
[order@cohesionbio.com](mailto:order@cohesionbio.com)

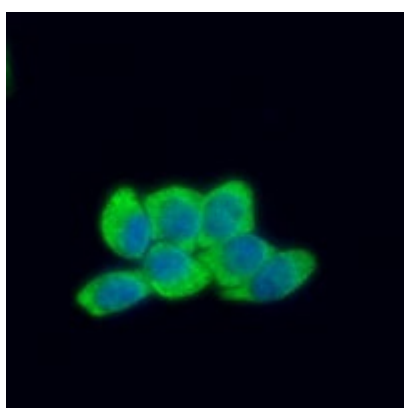
SUPPORT  
[techsupport@cohesionbio.com](mailto:techsupport@cohesionbio.com)

CUSTOM  
[custom@cohesionbio.com](mailto:custom@cohesionbio.com)

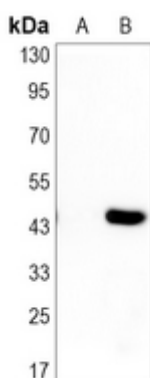
# Product Data Sheet



Western blot analysis of Anti-HA-tag Antibody against HEK293T cells transfected with vector overexpressing HA tag (A).



Immunofluorescent analysis of HA-Tag staining in HEK293T cells. Formalin-fixed cells were permeabilized with 0.1% Triton X-100 in TBS for 5-10 minutes and blocked with 3% BSA-PBS for 30 minutes at room temperature. Cells were probed with the primary antibody in 3% BSA-PBS and incubated overnight at 4 °C in a humidified chamber. Cells were washed with PBST and incubated with an AF488-conjugated secondary antibody (green) in PBS at room temperature in the dark. DAPI was used to stain the cell nuclei (blue).



Immunoprecipitation of HA-tagged protein from untransfected (A) and HEK293T cells transfected with vector overexpressing HA tag (B), using Recombinant Anti-HA-tag Rabbit mAb.

**Application key:** E- ELISA, WB- Western blot, IH- Immunohistochemistry, IF- Immunofluorescence, FC- Flow cytometry, IC- Immunocytochemistry, IP- Immunoprecipitation, ChIP- Chromatin Immunoprecipitation, EMSA- Electrophoretic Mobility Shift Assay, BL- Blocking, SE- Sandwich ELISA, CBE- Cell-based ELISA, RNAi- RNA interference

**Species reactivity key:** H- Human, M- Mouse, R- Rat, B- Bovine, C- Chicken, D- Dog, G- Goat, Mk- Monkey, P- Pig, Rb- Rabbit, S- Sheep, Z- Zebrafish

**COHESION BIOSCIENCES LIMITED**

**WEB**  
[www.cohesionbio.com](http://www.cohesionbio.com)

**ORDER**  
[order@cohesionbio.com](mailto:order@cohesionbio.com)

**SUPPORT**  
[techsupport@cohesionbio.com](mailto:techsupport@cohesionbio.com)

**CUSTOM**  
[custom@cohesionbio.com](mailto:custom@cohesionbio.com)