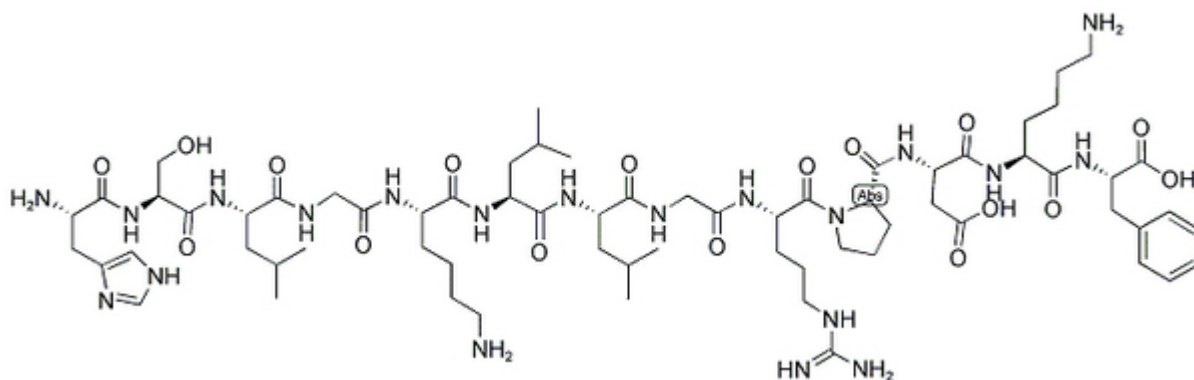


## [Leu144, Arg147]-PLP (139-151)

Catalog #	Source	Reactivity	Applications
CCP1692	Synthetic		
Description		Peptide to [Leu144, Arg147]-PLP (139-151)	
Biological Description			
Form		Lyophilized powder	
CAS Number		188859-65-6	
Molecular Formula		C67H110N20O17	
Molecular Weight		1467.75	
Purity		> 95%	
Chemical Structure		His - Ser - Leu - Gly - Lys - Leu - Leu - Gly - Arg - Pro - Asp - Lys - Phe	
Storage/Stability		Shipped at 4°C. Store at -20°C for one year.	
Structure			



**Application key:** E- ELISA, WB- Western blot, IH- Immunohistochemistry, IF- Immunofluorescence, FC- Flow cytometry, IC- Immunocytochemistry, IP- Immunoprecipitation, ChIP- Chromatin Immunoprecipitation, EMSA- Electrophoretic Mobility Shift Assay, SE- Sandwich ELISA, CBE- Cell-based ELISA, RNAi- RNA interference

**Species reactivity key:** H- Human, M- Mouse, R- Rat, B- Bovine, C- Chicken, D- Dog, Mk- Monkey, P- Pig, Rb- Rabbit, S- Sheep, Z- Zebrafish

### COHESION BIOSCIENCES LIMITED

**WEB**  
[www.cohesionbio.com](http://www.cohesionbio.com)

**ORDER**  
[order@cohesionbio.com](mailto:order@cohesionbio.com)

**SUPPORT**  
[techsupport@cohesionbio.com](mailto:techsupport@cohesionbio.com)

**CUSTOM**  
[custom@cohesionbio.com](mailto:custom@cohesionbio.com)