

PRP, Rat

Catalog #	Source	Reactivity	Applications
CCP1390	Synthetic		

Description Peptide to PRP, Rat

Biological Description The PACAP precursor contains another peptide called PACAP-related peptide, which is expressed in the parvocellular part of the paraventricular nucleus (PVN), implying its role as hypothalamic regulatory peptide. So far no information on this peptide in ti

Form Lyophilized powder

CAS Number 132769-35-8

Molecular Formula C148H242N42O45S

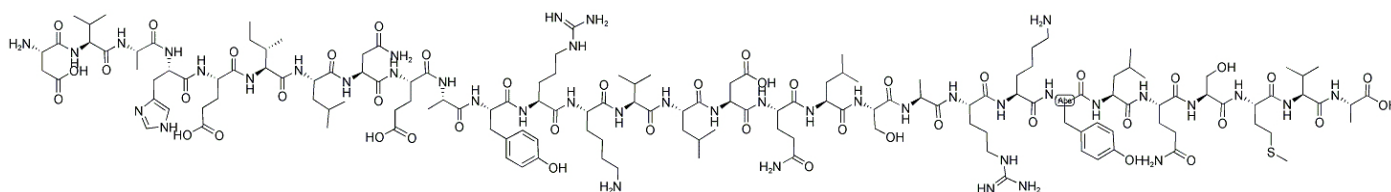
Molecular Weight 3361.9

Purity > 95%

Chemical Structure H - Asp - Val - Ala - His - Glu - Ile - Leu - Asn - Glu - Ala - Tyr - Arg - Lys - Val - Leu - Asp - Gln - Leu - Ser - Ala - Arg - Lys - Tyr - Leu - Gln - Ser - Met - Val - Ala - OH

Storage/Stability Shipped at 4°C. Store at -20°C for one year.

Structure



Application key: E- ELISA, WB- Western blot, IH- Immunohistochemistry, IF- Immunofluorescence, FC- Flow cytometry, IC- Immunocytochemistry, IP- Immunoprecipitation, ChIP- Chromatin Immunoprecipitation, EMSA- Electrophoretic Mobility Shift Assay, SE- Sandwich ELISA, CBE- Cell-based ELISA, RNAi- RNA interference

Species reactivity key: H- Human, M- Mouse, R- Rat, B- Bovine, C- Chicken, D- Dog, Mk- Monkey, P- Pig, Rb- Rabbit, S- Sheep, Z- Zebrafish

COHESION BIOSCIENCES LIMITED

WEB
www.cohesionbio.com

ORDER
order@cohesionbio.com

SUPPORT
techsupport@cohesionbio.com

CUSTOM
custom@cohesionbio.com