



# **Tannase Microplate Assay Kit**

## **User Manual**

**Catalog # CAK1239**

(Version 1.2A)

Detection and Quantification of Tannase Activity in Tissue extracts,  
Cell lysate, Cell culture media, Other biological fluids Samples.

**For research use only. Not for diagnostic or therapeutic procedures.**

I. INTRODUCTION.....	2
II. KIT COMPONENTS.....	3
III. MATERIALS REQUIRED BUT NOT PROVIDED.....	4
IV. SAMPLE PREPARATION.....	4
V. ASSAY PROCEDURE.....	5
VI. CALCULATION.....	6
VII. TYPICAL DATA.....	7
VIII. TECHNICAL SUPPORT.....	7
IX. NOTES.....	7

## I. INTRODUCTION

Tannases (tannin acyl hydrolases, EC 3.1.1.20) catalyze the hydrolysis of tannic acid by breaking its ester and depside bonds, releasing glucose and gallic acid. These enzymes are widely used in a number of industrial applications, including the manufacture of instant tea, beer, fruit juices, some wines (by reduction of the adverse effects of tannins in beverages), and treating of tannin-polluting industrial effluents and agricultural wastes. Another important application of tannase is production of gallic acid, used as an important intermediate compound for the chemical synthesis of propyl gallate and trimethoprim, which are important in the food and pharmaceutical industries.

Tannase Microplate Assay Kit is based on hydrolysis of substrate to gallic acid. The intensity of the product color, measured at 520 nm, is proportional to the Tannase activity in the sample.

## II. KIT COMPONENTS

Component	Volume	Storage
96-Well Microplate	1 plate	
Assay Buffer	30 ml x 4	4 °C
Reaction Buffer	4 ml x 1	4 °C
Substrate	Powder x 1	4 °C
Substrate Diluent	4 ml x 1	4 °C
Dye Reagent A	Powder x 1	4 °C
Dye Reagent A Diluent	6 ml x 1	4 °C
Dye Reagent B	4 ml x 1	4 °C
Standard	Powder x 1	4 °C
Positive Control	Powder x 1	-20 °C
Technical Manual	1 Manual	

### Note:

**Substrate:** add 4 ml Substrate Diluent to dissolve before use.

**Dye Reagent A:** add 6 ml Dye Reagent A Diluent to dissolve before use.

**Standard:** add 1 ml distilled water to dissolve, then add 100 µl into 900 µl distilled water, mix; the concentration will be 2 mmol/L.

**Positive Control:** add 0.1 ml distilled water to dissolve before use, vortex and then centrifuge, take the supernatant into the plate.

### **III. MATERIALS REQUIRED BUT NOT PROVIDED**

1. Microplate reader to read absorbance at 520 nm
2. Distilled water
3. Pipettor, multi-channel pipettor
4. Pipette tips
5. Mortar
6. Ice
7. Centrifuge
8. Timer

### **IV. SAMPLE PREPARATION**

1. For cell and bacteria samples

Collect cell or bacteria into centrifuge tube, discard the supernatant after centrifugation, add 1 ml Assay Buffer for  $5 \times 10^6$  cell or bacteria, sonicate (with power 20%, sonicate 3s, interval 10s, repeat 30 times); centrifuged at 8000g 4 °C for 10 minutes, take the supernatant into a new centrifuge tube and keep it on ice for detection.

2. For tissue samples

Weigh out 0.1 g tissue, homogenize with 1 ml Assay Buffer on ice, centrifuged at 8000g 4 °C for 10 minutes, take the supernatant into a new centrifuge tube and keep it on ice for detection.

3. For liquid samples

Detect directly, or dilute with Assay Buffer.

## V. ASSAY PROCEDURE

Add following reagents into the microplate:

Reagent	Sample	Blank	Standard	Positive Control
Substrate	40 $\mu$ l	40 $\mu$ l	40 $\mu$ l	40 $\mu$ l
Reaction Buffer	40 $\mu$ l	40 $\mu$ l	40 $\mu$ l	40 $\mu$ l
Sample	20 $\mu$ l	--	--	--
Distilled water	--	20 $\mu$ l	--	--
Standard	--	--	20 $\mu$ l	--
Positive Control	--	--	--	20 $\mu$ l
Mix, incubate at 30 °C for 10 minutes.				
Dye Reagent A	60 $\mu$ l	60 $\mu$ l	60 $\mu$ l	60 $\mu$ l
Dye Reagent B	40 $\mu$ l	40 $\mu$ l	40 $\mu$ l	40 $\mu$ l
Mix, wait for 10 minutes, measured at 520 nm and record the absorbance.				

### Note:

- 1) Perform 2-fold serial dilutions of the top standards to make the standard curve.
- 2) For unknown samples, we recommend doing a pilot experiment & testing several doses to ensure the readings are within the standard curve range. If the enzyme activity is lower, please add more sample into the reaction system; or increase the reaction time; if the enzyme activity is higher, please dilute the sample, or decrease the reaction time.
- 3) Reagents must be added step by step, can not be mixed and added together.

## VI. CALCULATION

**Unit Definition:** One unit of Tannase activity is defined as the enzyme produces 1  $\mu\text{mol}$  of gallic acid per minute.

### 1. According to the protein concentration of sample

$$\begin{aligned}\text{Tannase (U/mg)} &= (C_{\text{Standard}} \times V_{\text{Standard}}) \times (\text{OD}_{\text{Sample}} - \text{OD}_{\text{Blank}}) / (\text{OD}_{\text{Standard}} - \text{OD}_{\text{Blank}}) / \\ &\quad (V_{\text{Sample}} \times C_{\text{Protein}}) / T \\ &= 0.02 \times (\text{OD}_{\text{Sample}} - \text{OD}_{\text{Blank}}) / (\text{OD}_{\text{Standard}} - \text{OD}_{\text{Blank}}) / C_{\text{Protein}}\end{aligned}$$

### 2. According to the weight of sample

$$\begin{aligned}\text{Tannase (U/g)} &= (C_{\text{Standard}} \times V_{\text{Standard}}) \times (\text{OD}_{\text{Sample}} - \text{OD}_{\text{Blank}}) / (\text{OD}_{\text{Standard}} - \text{OD}_{\text{Blank}}) / \\ &\quad (V_{\text{Sample}} \times W / V_{\text{Assay}}) / T \\ &= 0.02 \times (\text{OD}_{\text{Sample}} - \text{OD}_{\text{Blank}}) / (\text{OD}_{\text{Standard}} - \text{OD}_{\text{Blank}}) / W\end{aligned}$$

### 3. According to the quantity of cells or bacteria

$$\begin{aligned}\text{Tannase (U/10}^4\text{)} &= (C_{\text{Standard}} \times V_{\text{Standard}}) \times (\text{OD}_{\text{Sample}} - \text{OD}_{\text{Blank}}) / (\text{OD}_{\text{Standard}} - \text{OD}_{\text{Blank}}) / \\ &\quad (V_{\text{Sample}} \times N / V_{\text{Assay}}) / T \\ &= 0.02 \times (\text{OD}_{\text{Sample}} - \text{OD}_{\text{Blank}}) / (\text{OD}_{\text{Standard}} - \text{OD}_{\text{Blank}}) / N\end{aligned}$$

$C_{\text{Protein}}$ : the protein concentration, mg/ml;

$C_{\text{Standard}}$ : the concentration of Standard,  $200 \mu\text{mol/L} = 0.2 \mu\text{mol/ml}$ ;

W: the weight of sample, g;

N: the quantity of cell or bacteria,  $N \times 10^4$ ;

$V_{\text{Sample}}$ : the volume of sample, 0.02 ml;

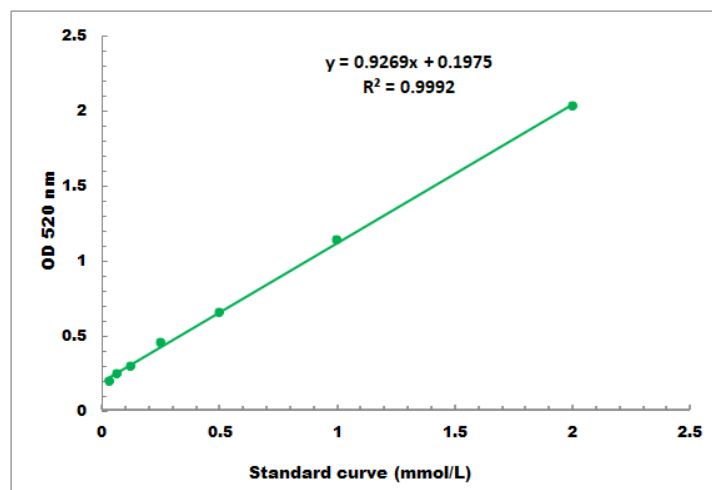
$V_{\text{Standard}}$ : the volume of standard, 0.02 ml;

$V_{\text{Assay}}$ : the volume of Assay buffer, 1 ml;

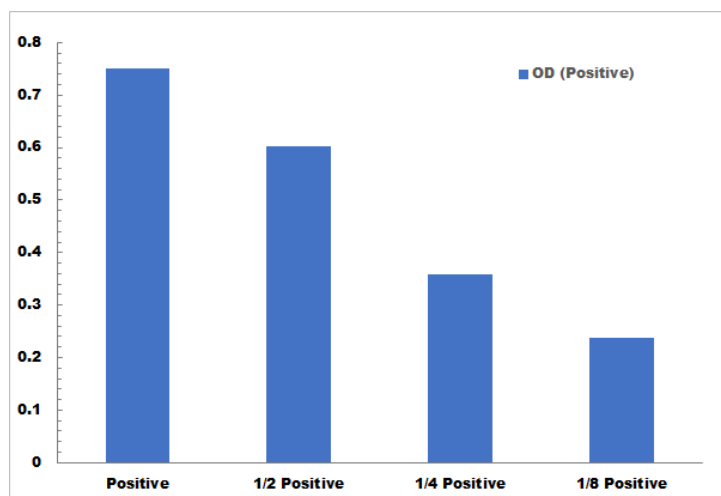
T: the reaction time, 10 minutes.

## VII. TYPICAL DATA

The standard curve is for demonstration only. A standard curve must be run with each assay.



Detection Range: 0.02 mmol/L - 2 mmol/L



Positive Control reaction in 96-well plate assay with decreasing the concentration

## VIII. TECHNICAL SUPPORT

For troubleshooting, information or assistance, please go online to [www.cohesionbio.com](http://www.cohesionbio.com) or contact us at [techsupport@cohesionbio.com](mailto:techsupport@cohesionbio.com)

## IX. NOTES